

REDUCE

REUSE RECYCLE



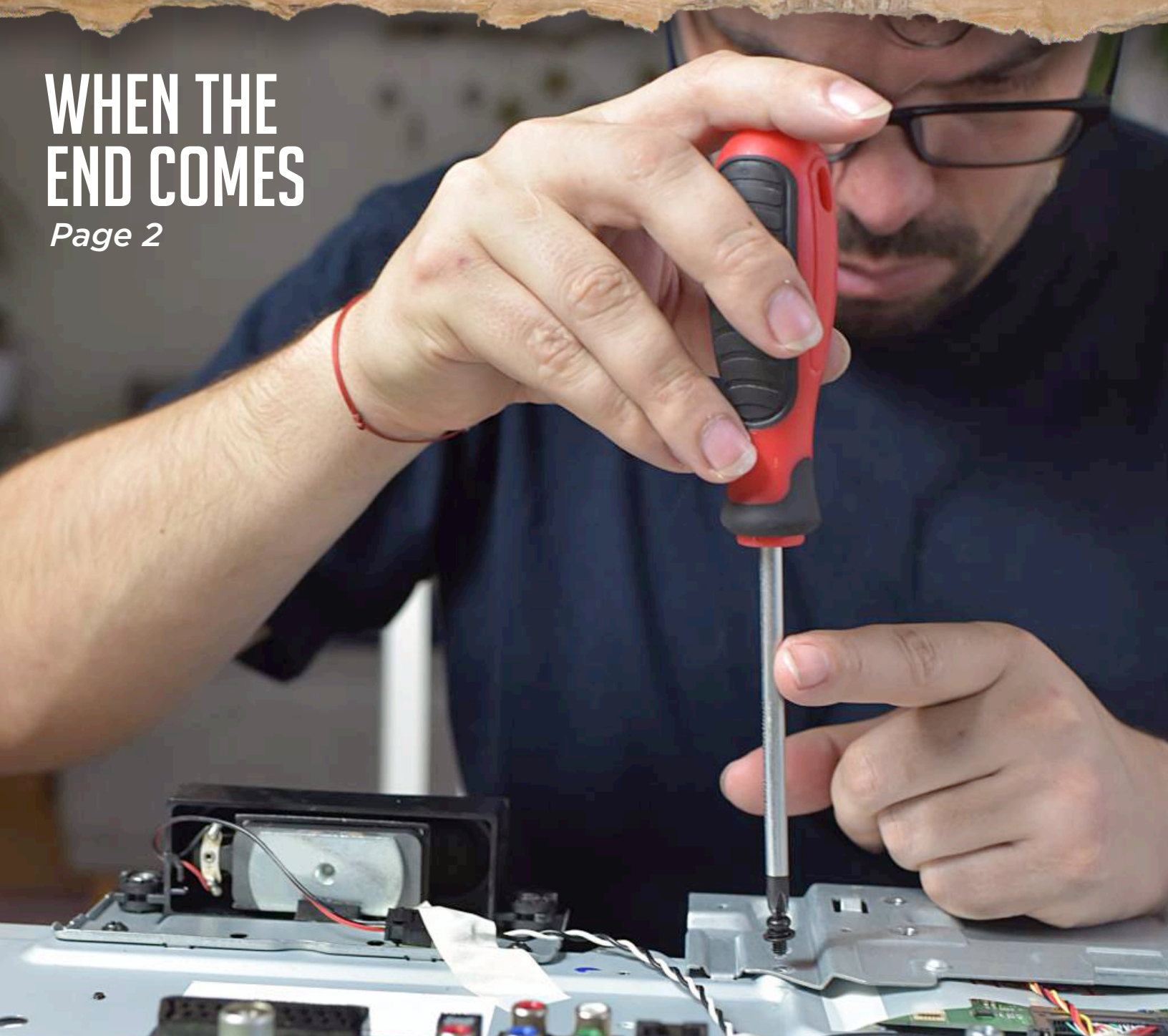
ZERO WASTE

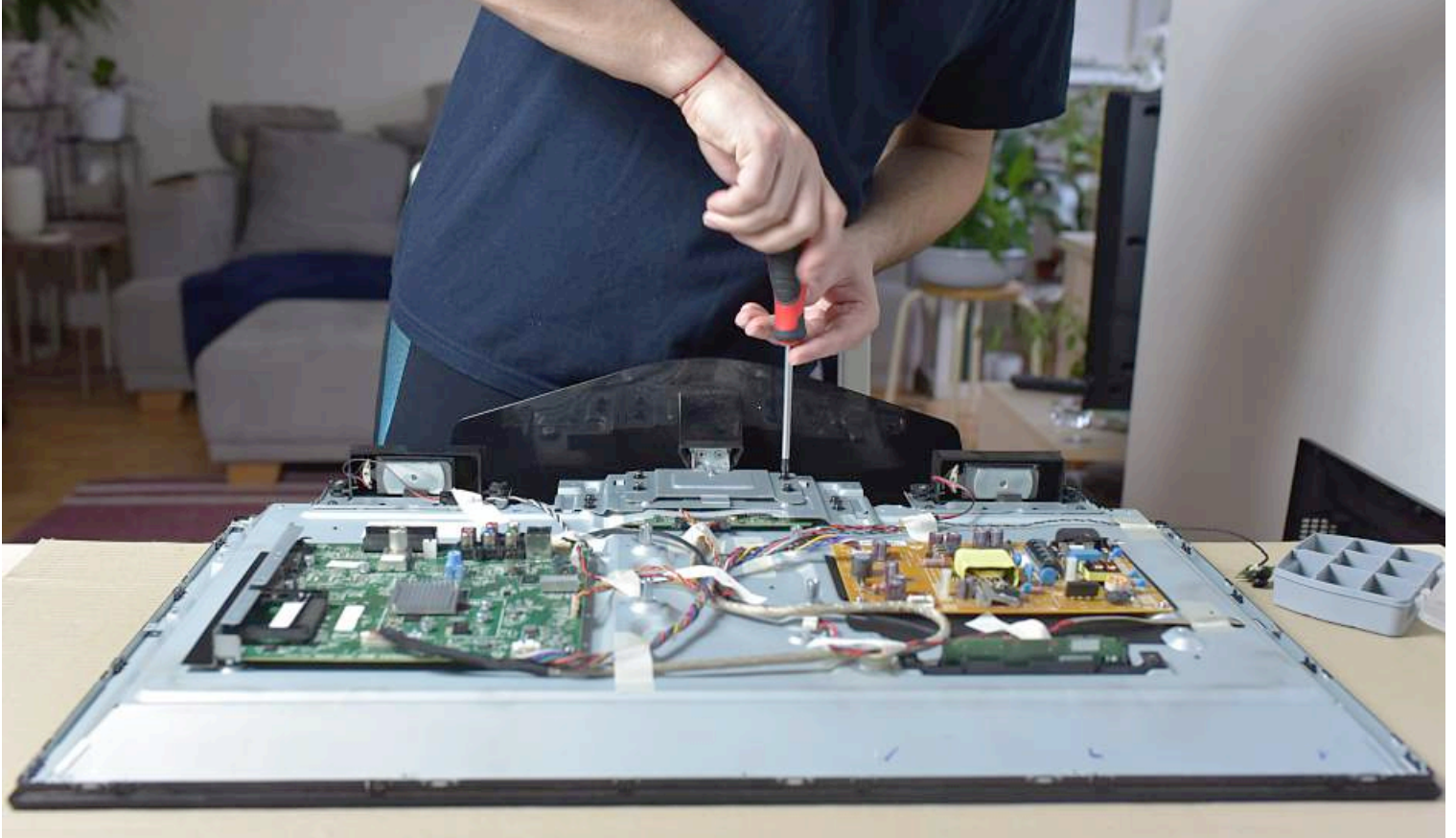
News

A publication for County of Santa Cruz GreenWaste Recovery
Multi-Family Residence Customers | Summer 2022

WHEN THE END COMES

Page 2





WHEN THE END COMES

For too long, producers of goods have had no responsibility for products that create a burden on their customers and our communities for disposal at the end of product life. Here in Santa Cruz County, we have been advocating for Extended Producer Responsibility (EPR). EPR is about the producers of products developing their goods (and packaging) with an end of life in mind. Can resources be recovered and recycled for reuse? If it breaks, can it be fixed? Without EPR, often the answer is no.

The Right to Repair Bill (SB 983) is currently pending in California. **ifixit.com** and **repair.org** are advocating for SB 983 so that manufacturers will be required to provide their customers and independent repair businesses with fair access to service information and affordable replacement parts. Join the fight for your Right to Repair today at <https://www.repair.org/stand-up>

When an item is no longer useful to you, before you dump it, offer it for someone else to enjoy. A little paint, sewing, or a new part may make your item useful for years to come. Whether you donate to a worthy cause, or offer items for sale or for free, giving things a second chance helps keep resources out of the landfill.

Tips to Live More With Less:

Do you really need something new? Avoid the urge to splurge and only buy items you actually need. Just like your food shopping, have a list of what you want and need. Before you buy, check your list to help prevent over-buying, save money and waste less.



Repurposing or repairing an item may give you the wonderful feeling that you get when you buy something new. A paint job or replaced part can give new life to something you already own.

When you do buy new, buy thoughtfully. Investigate the product and the company that makes it. Can it be repaired? Do they ship with no Styrofoam? Consider writing a letter to help a company think about sustainability. Fewer trips to the landfill are good for the planet and your pocket!

HARD TO RECYCLE OR REPURPOSE ITEMS?

CHECK OUT <https://www.freecycle.org/find-towns>





Please place all organic items in the organics cart or bin.
Por favor coloque todos los artículos orgánicos en el bote o contenedor orgánicos.



Coffee & Filters
Café & Filtros



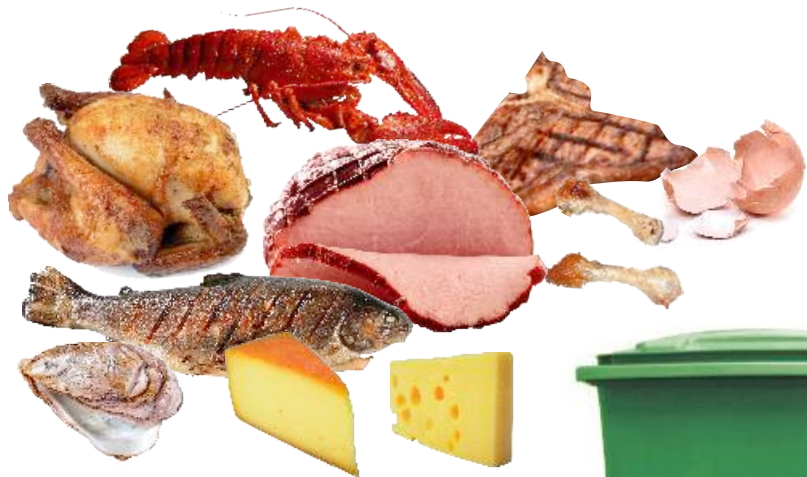
Grains
Granos



Fruits & Vegetables
Frutas & Verduras



Yard Trimmings
Recortes de Jardín



Dairy & Cooked Meats
Lácteos & Carne Cocinada



TIP: Layer your food scraps with yard trimmings. No bags, please!



NO LIQUIDS
NO LIQUIDOS



NO HAZARDOUS WASTE
NO RESIDUOS PELIGROSOS



NO RAW MEATS
NO CARNE CRUDA



NO DIRT
NO TIERRA



NO RECYCLABLE MATERIAL
NO MATERIAL RECICLABLE



NO GARBAGE
NO BASURA



Please place clean and dry recyclable items un-bagged in your recyclables cart or bin.
Por favor, coloque los artículos reciclables limpios y secos no embolsado en su carrito o contenedor de materiales reciclables.



Metal
Metal



Paper:
El Papel



Cardboard
Unwaxed & flattened
Cartón
Sin cera y aplanado



Glass
Vidrio



Small Electronic Waste
Desperdicios Pequeños
Electrónicos



Plastic & Film
Plástico y Película de Plástico

EMPTY
CLEAN
DRY
VACÍO
LIMPIO
SECO



NO LIQUIDS
NO LIQUIDOS



NO BATTERIES
NO BATERÍAS



NO HAZARDOUS WASTE
NO RESIDUOS PELIGROSOS



NO GARBAGE
NO BASURA



NO FOOD
NO COMIDA



NO YARD WASTE
NO BASURA ORGÁNICA



WHAT GOES WHERE?

In Santa Cruz County, GreenWaste Recovery hauls organics, recyclables and garbage. The ability to find an endmarket for materials means they can recover more through our recycling and organic carts, and keep resources out of our landfill. But, do you know who processes these materials? GreenWaste takes the recyclable materials to Watsonville to be loaded onto large transfer trucks, and transports them to their San Jose Material Recovery Facility (MRF) for sorting and recycling.

Check out this video of how your recyclables are managed! Organics are taken to the Buena Vista Landfill and composted by Keith Day Company into a rich renewable resource.

<https://www.greenwaste.com/about-us/processing-facility/>



TREATED WOOD WASTE DISPOSAL

At Buena Vista Landfill and Ben Lomond Transfer Station, treated wood waste (TWW) can only be accepted from addresses within the Santa Cruz County including unincorporated Santa Cruz County, and the cities of Capitola, Scotts Valley, Santa Cruz and Watsonville.

Everyone wishing to dispose of TWW must have the TWW separate from other materials or your load may be rejected from drop off.

HOMEOWNERS WHO SELF-HAUL:

- TWW accepted Monday - Saturday
- Customers must unload their TWW by hand into the bin
- Ben Lomond limited to 500 lbs. per day
- Waste Manifest required when transporting 50 lbs. or more

SMALL & LARGE QUANTITY HAULERS, GENERATORS, SELF-TRANSPORTERS:

- TWW accepted Tuesday-Thursday at Buena Vista only
- Customers must unload the TWW by hand in bin
- Up to 10,000 lbs. per calendar year
- Waste Manifest Profile required



REPORT ILLEGAL DUMPING:

ADD MY SANTA CRUZ COUNTY APP to your phone to make reports of potholes, illegal dumping, report graffiti, and so much more!



PROP 218 FAQs

RECYCLING AND SOLID WASTE INFRASTRUCTURE CHARGE

Includes link to Solid Waste System Cost of Service Study Report

<https://www.dpw.co.santacruz.ca.us/Portals/19/pdfs/Recycling%20%26%20Trash/FAQs%20for%20Webpage.pdf>



RECYCLING GUIDES INSIDE!

Page 3 & 4



County of Santa Cruz
Community Development and Infrastructure
701 Ocean Street, Room 410
Santa Cruz, CA 95060
(831) 454-2160

Presort Standard
U.S. Postage
PAID
Complete Mailing
Service, Inc.



Printed on 55% recycled 30% post-consumer waste paper processed chlorine-free, using soy-based inks.

RECYCLING RESOURCES



Recycle Information Line 831-454-2333

- What and where to recycle (recorded messages)

Curbside Refuse, Recycling and Yard Waste Collection 800-665-2209

(operated by GreenWaste Recovery)
www.greenwaste.com/santa-cruz-county

- Begin new service
- Report missed recycling or trash service
- Request delivery or removal of carts
- Obtain oil recycling jugs



County Community Development and Infrastructure 831-454-2160

www.santacruzcountyrecycles.org

- Apartments and business recycling inquiries
- Complaints, compliments or suggestions
- Report roadside trash 831-477-3999

Download and use the "My Santa Cruz County" free mobile app

Household Hazardous Waste 831-454-2606
(recorded messages)

- Schedule for free disposal
- Non-hazardous alternatives



Contact Zero Waste Outreach Team 831 454-2160

or ZeroWaste@santacruzcounty.us

- Questions
- Volunteer as a Zero Waste champion

Composting Resources www.compostsantacruzcounty.org

Buena Vista Landfill & Recycling Center 831-454-5153

- Recorded information 831-454-2430
- 1231 Buena Vista Drive, Watsonville 95076
Open Mon-Sat 7:30-3:30
HHW Facility - Open Wed, Fri & Sat 7:30-3:30

Ben Lomond Transfer Station & Recycling Center 831-336-3951

- Recorded information 831-454-2430
- 9835 Newell Creek Road, Ben Lomond 95005
Open Mon-Sat 7:30-3:30
HHW Facility - Open Thursdays 7:30-3:30

California Grey Bears Recycling Centers 831-479-1055 ext. 235

Mid County, 2710 Chanticleer Avenue, Santa Cruz 95065
Open 7:30-3:45 daily

CRV Redemption - Open Mon-Sat 10:00-3:00

Buena Vista Landfill - Open Mon-Sat 7:30-3:30

Ben Lomond Transfer Station - Open Mon-Sat 7:30-3:30



City of Santa Cruz Resource Recovery Facility & Recycling Center 831-420-6270

- Open to unincorporated county residents in Davenport and Bonny Doon only
- 605 Dimeo Lane, Santa Cruz 95060
Open Mon-Sat 7:30-3:30
HHW Facility - Currently closed for remodel. Info at:
<https://www.cityofsantacruz.com/government/city-departments/public-works/resource-recovery-garbage-recycling-sweeping/hazardous-waste>



Para información en español sobre el reciclaje en las áreas no incorporadas del condado de Santa Cruz, favor de llamar al (800) 665-2209.