

MID-PEN HOUSING
1500 CAPITOLA ROAD MIXED-USE

MID-PEN HOUSING CORP.
WATSONVILLE DEVELOPMENT OFFICE
275 MAIN STREET, SUITE 204, WATSONVILLE, CA 95076
A.P.N.: 026-741-12, 026-741-13, 026-741-14, 026-741-15

JOB NO.
17088

PRINT DATE: 7.26.2019
DRAWN BY: VV
CHECKED BY: HR
SET ISSUED:

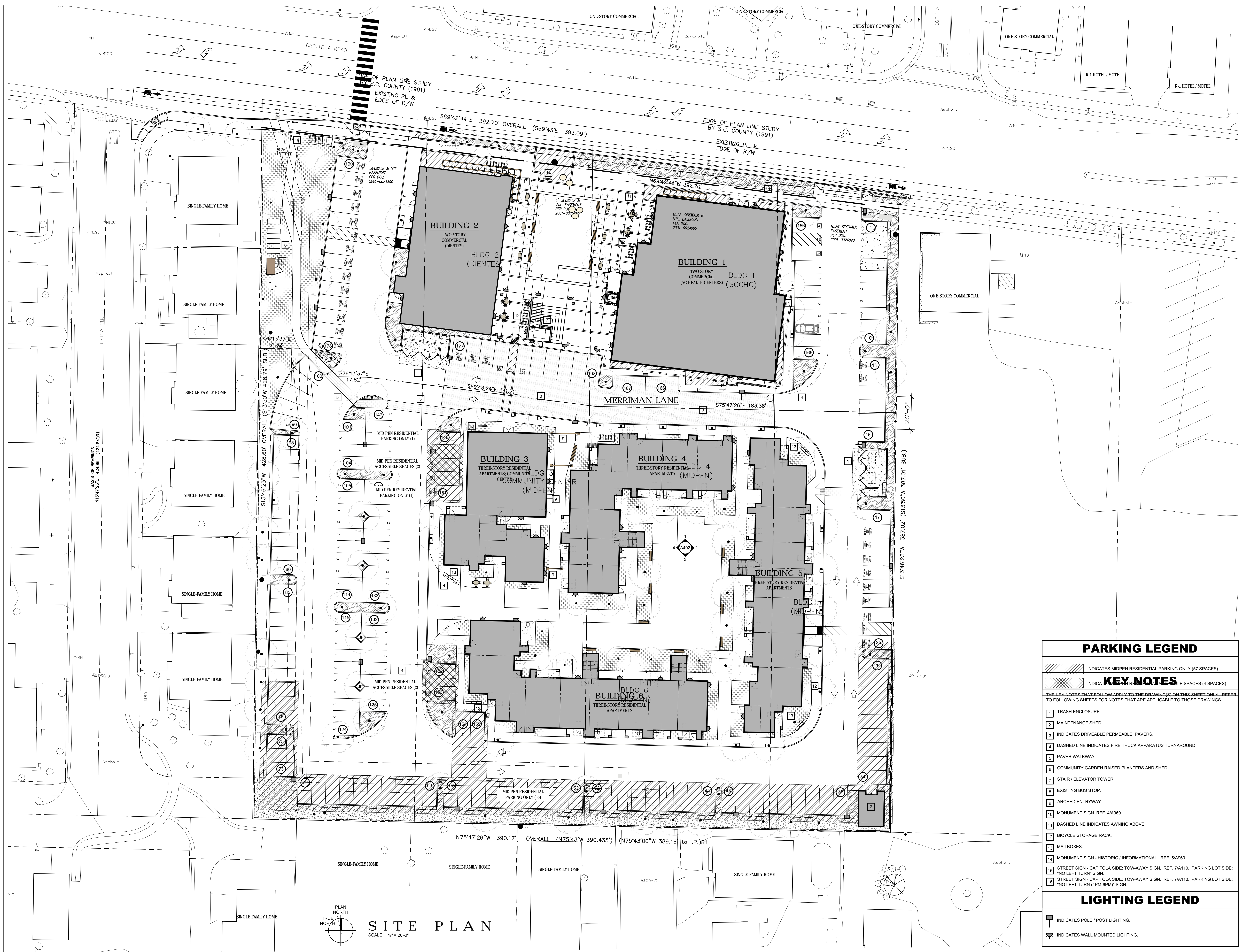
11/06/2018 COUNTY APPLICATION PACKAGE
02/15/2019 COUNTY REUBMITTAL APPLICATION PACKAGE
05/13/2019 COUNTY REUBMITTAL APPLICATION PACKAGE

SEE FOLLOWING SHEETS FOR NOTES THAT ARE APPLICABLE TO THOSE DRAWINGS.

SHEET NAME:
SITE
PARKING
DIAGRAM

SHEET NO.
A101

FILE NAME: 17088A101



PLAN NORTH
TRUE NORTH
SITE PLAN
SCALE: 1" = 20'-0"

PARKING LEGEND	
	INDICATES MIDPEN RESIDENTIAL PARKING ONLY (57 SPACES)
	INDICATES MIDPEN RESIDENTIAL ACCESSIBLE SPACES (4 SPACES)

KEY NOTES	
1	TRASH ENCLOSURE.
2	MAINTENANCE SHED.
3	INDICATES DRIVEABLE PERMEABLE PAVERS.
4	DASHED LINE INDICATES FIRE TRUCK APPARATUS TURNAROUND.
5	PAVER WALKWAY.
6	COMMUNITY GARDEN RAISED PLANTERS AND SHED.
7	STAIR / ELEVATOR TOWER
8	EXISTING BUS STOP.
9	ARCHED ENTRYWAY.
10	MONUMENT SIGN. REF. 4/A960.
11	DASHED LINE INDICATES AWNING ABOVE.
12	BICYCLE STORAGE RACK.
13	MAILBOXES.
14	MONUMENT SIGN - HISTORIC / INFORMATIONAL. REF. 5/A960
15	STREET SIGN - CAPITOLA SIDE: TOW-AWAY SIGN. REF. 7/A110. PARKING LOT SIDE: "NO LEFT TURN" SIGN
16	STREET SIGN - CAPITOLA SIDE: TOW-AWAY SIGN. REF. 7/A110. PARKING LOT SIDE: "NO LEFT TURN (4PM-6PM)" SIGN.

LIGHTING LEGEND	
	INDICATES POLE / POST LIGHTING.
	INDICATES WALL MOUNTED LIGHTING.