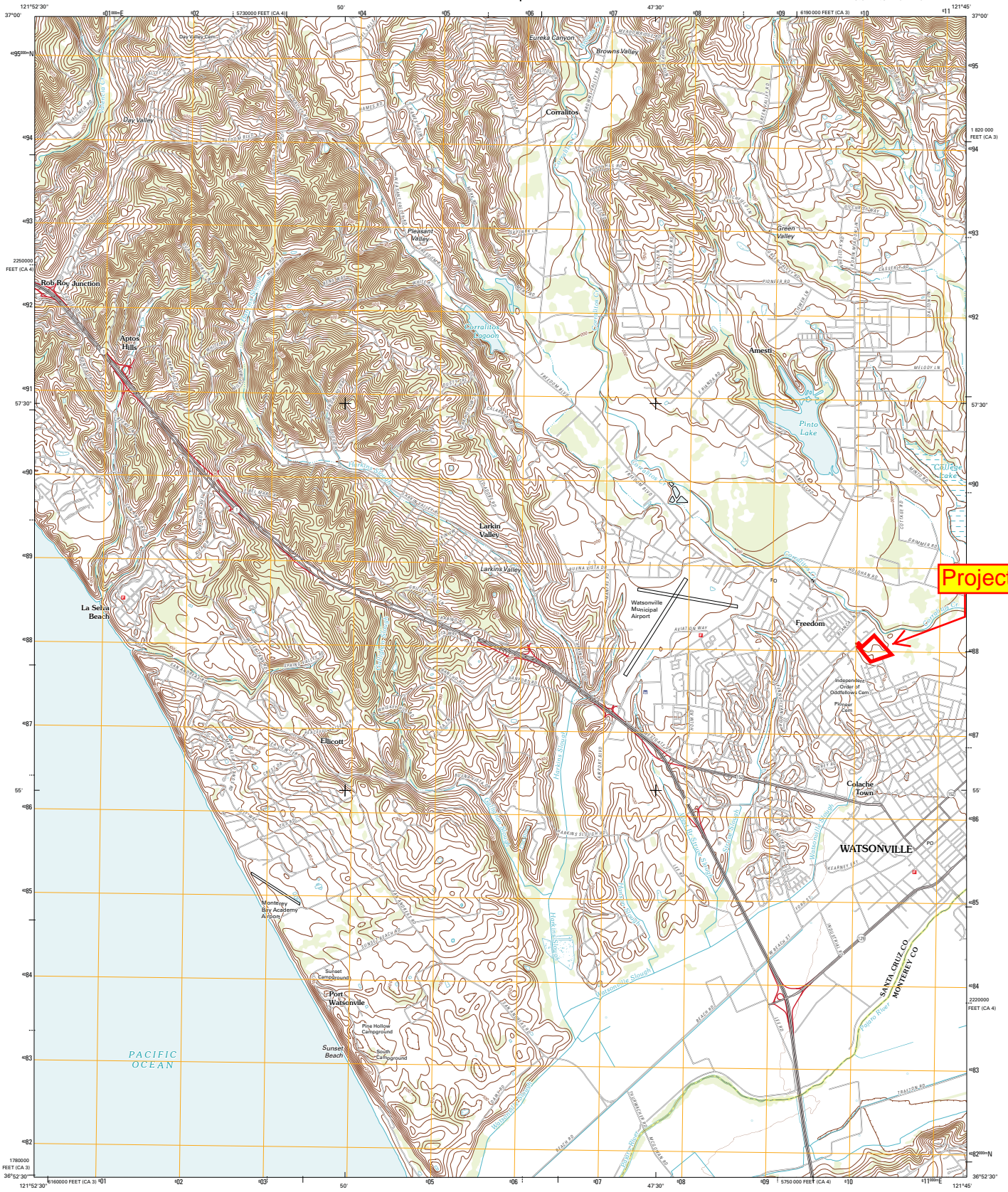




U.S. DEPARTMENT OF THE INTERIOR
U. S. GEOLOGICAL SURVEY

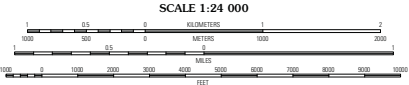
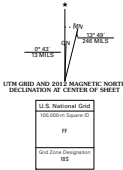


WATSONVILLE WEST QUADRANGLE
CALIFORNIA
7.5-MINUTE SERIES



Project Site

Produced by the United States Geological Survey
North American Datum of 1983 (NAD83)
World Geodetic System of 1984 (WGS84). Projection and
1,000-meter grid. Universal Transverse Mercator, Zone 10S
10 000,000 meter. California Coordinate System of 1983
(zones 3 and 4)



ROAD CLASSIFICATION

Interstate Route	State Route
US Route	Local Road
Ramp	4WD
Interstate Route	US Route
	State Route

Inventory:NAP, May 2010
Roads:©2006-2011 TomTom
Names:©2006-2011 TomTom
Hydrography:National Hydrography Dataset, 2010
Contours:National Elevation Dataset, 1999
Boundaries:Census, BWC, BCG, USGS, 1972 - 2010

CONTOUR INTERVAL 20 FEET
NORTH AMERICAN VERTICAL DATUM OF 1988

This map was produced to conform with the
National Geospatial Program US Topo Product Standard, 2011.
A metadata file associated with this product is data version 0.6.1

Local	Local	Mount
Super	Water	East
Mass	Landing	Private

WATSONVILLE WEST, CA
2012

ADJOINING 7.5 QUADRANGLES

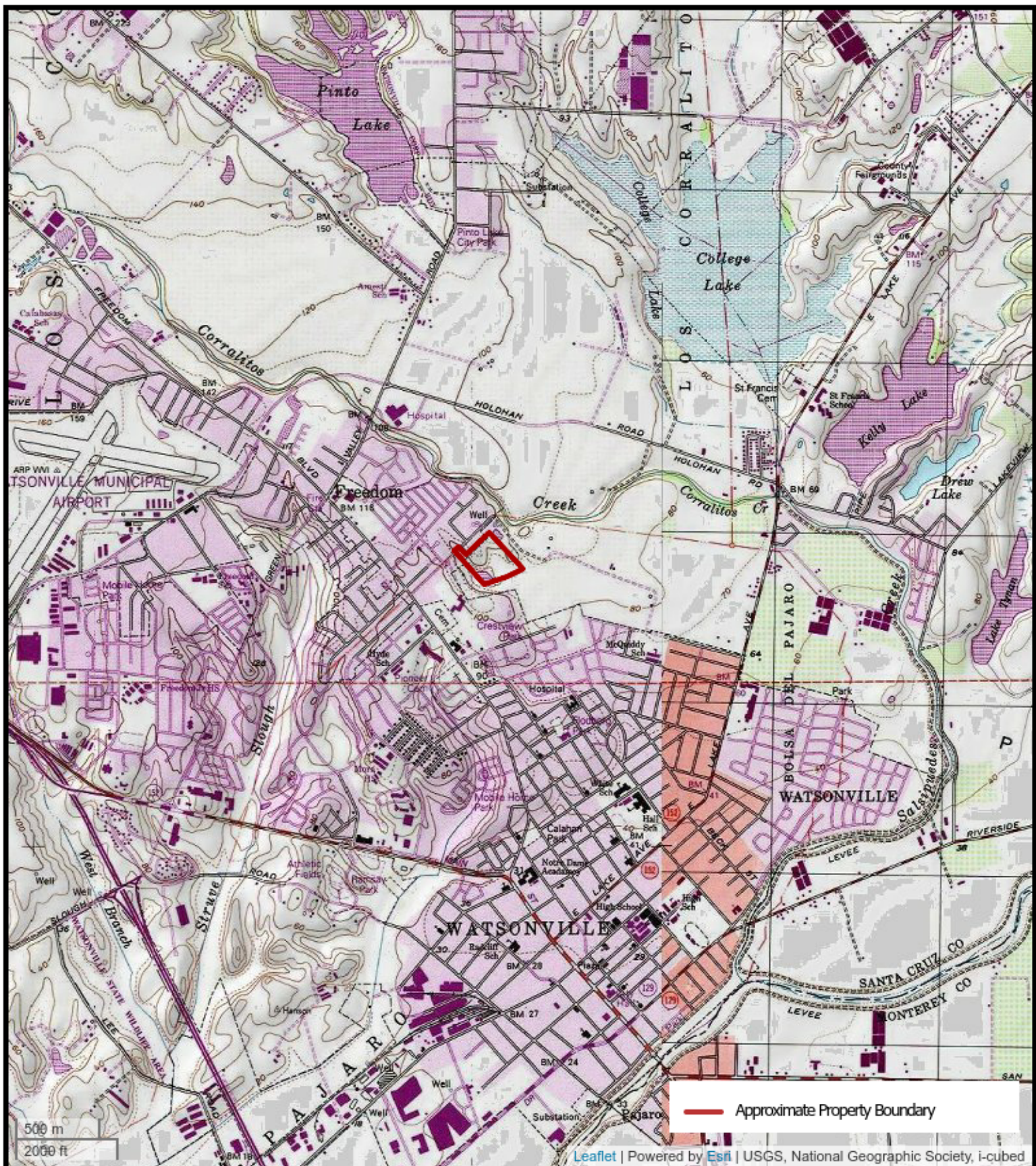


FIGURE 1: TOPOGRAPHIC MAP

78 Atkinson Lane and Brewington Avenue, Watsonville, California 95076
 AEI Project Number: 403611





FIGURE 2: SITE MAP

78 Atkinson Lane and Brewington Avenue, Watsonville, California 95076
 AEI Project Number: 403611



AEI
 Consultants



78 Atkinson Ln

Google Earth

© 2020 Google

Imagery Date: 5/9/2018 36°55'53.54" N 121°45'46.58" W elev 0 ft eye alt 2219 ft

1985

501 ft

Pippin II Project Site



May 13, 2021

Metro Bus Stops

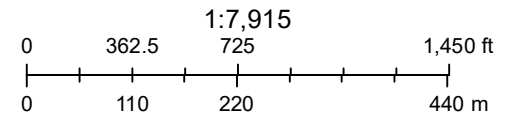
● Metro Bus Stops

Metro Bus Routes

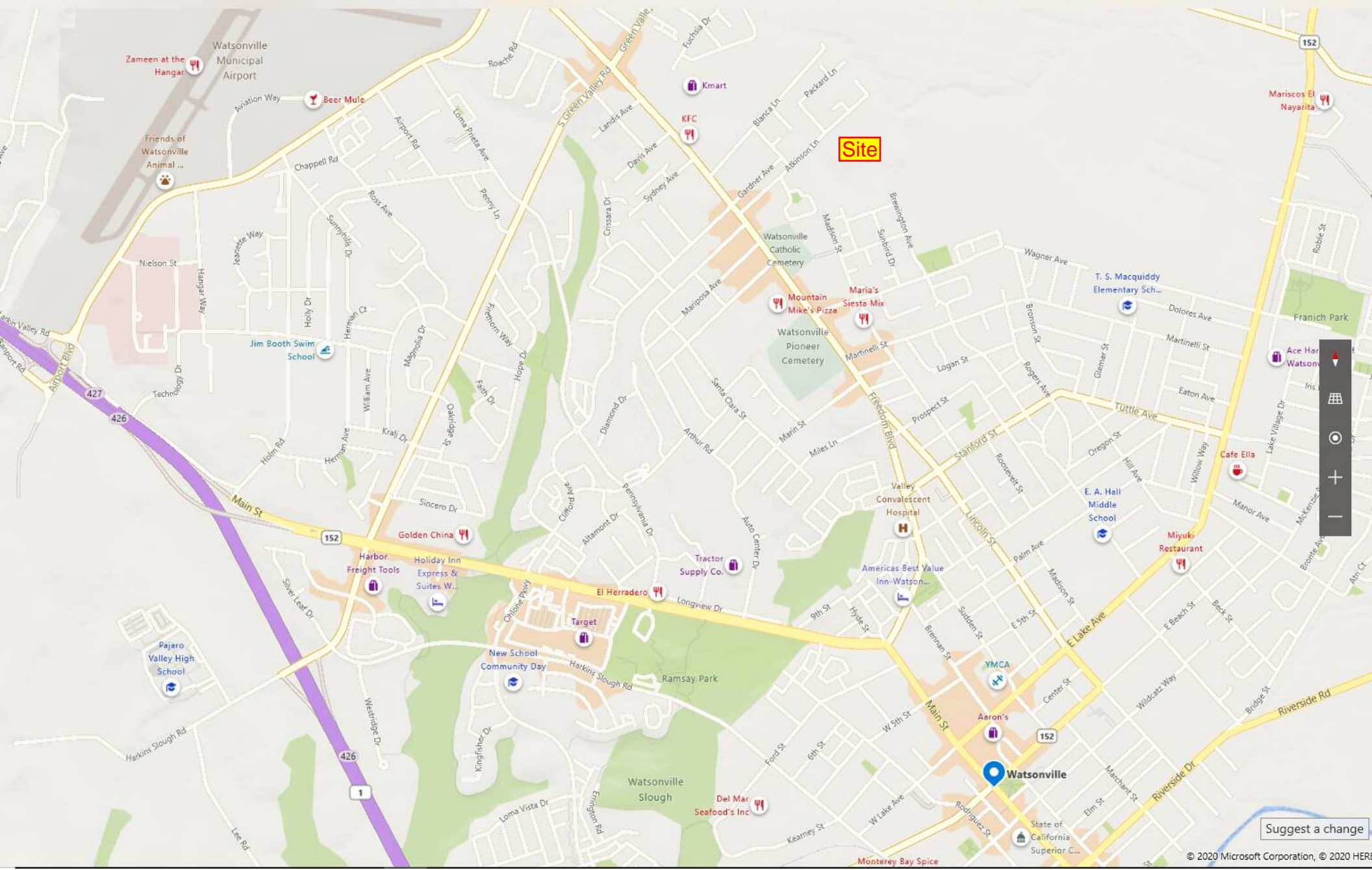
— Metro Bus Routes

City Limits

■ City Limits

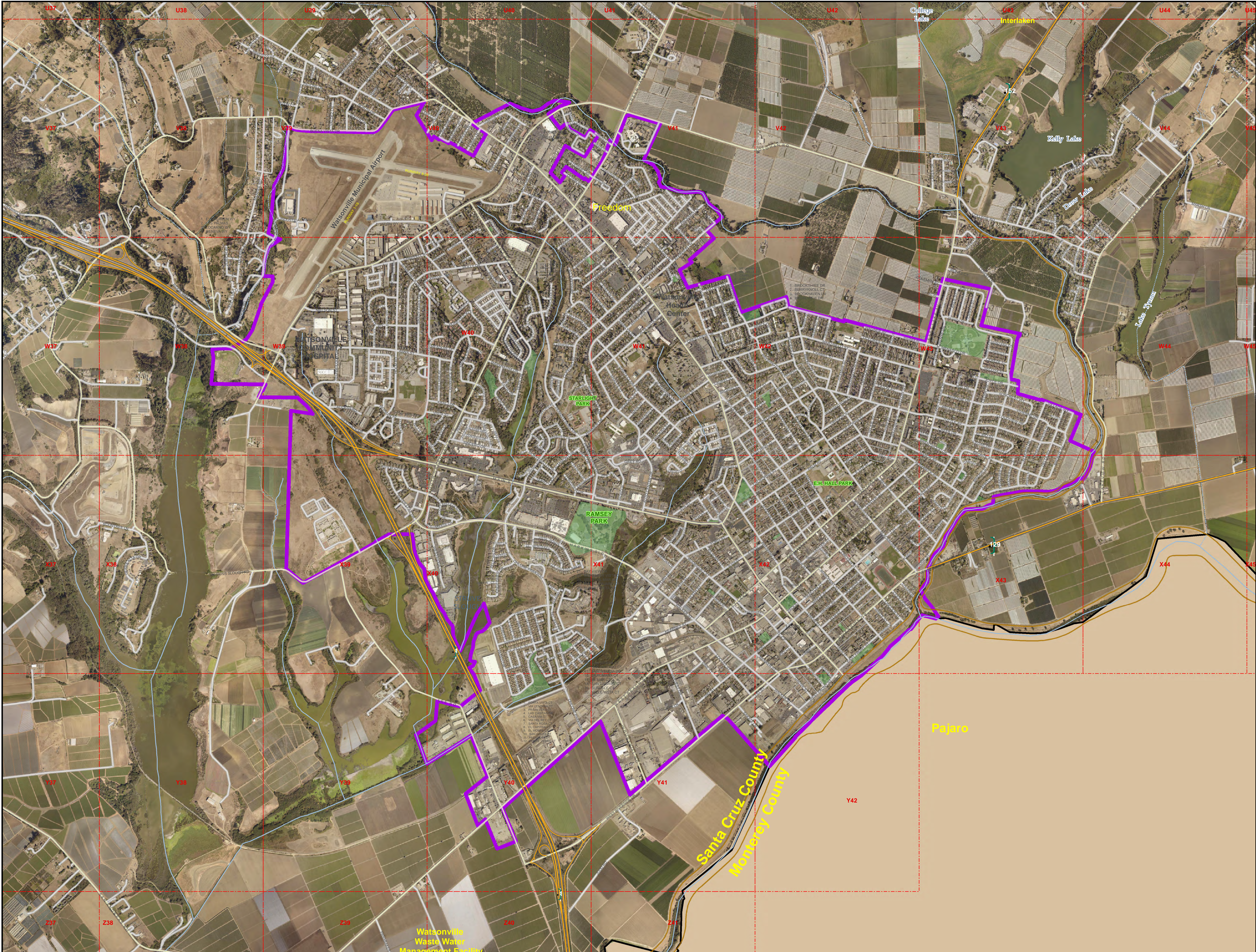


County of Santa Cruz

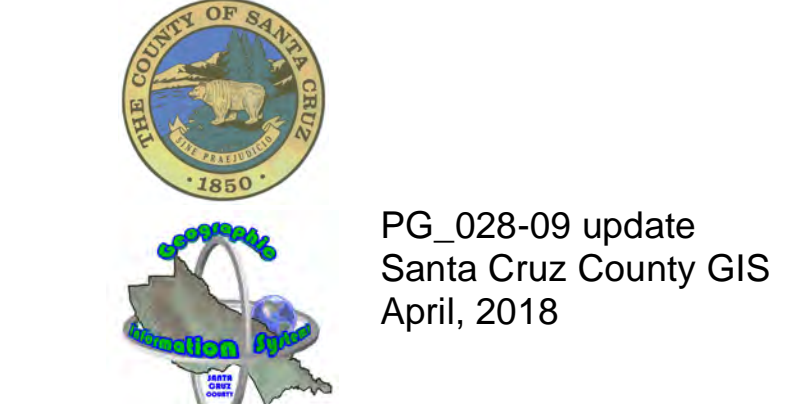


Site

Suggest a change



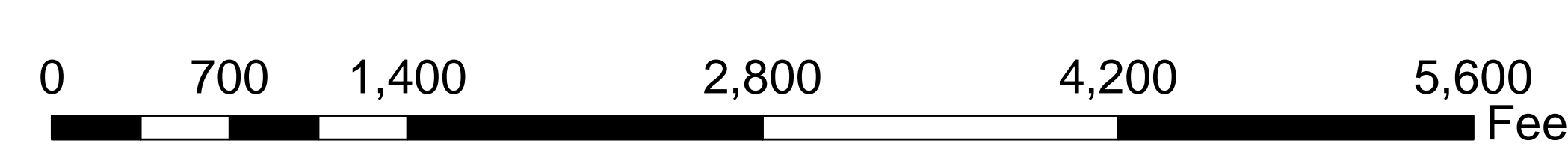
Santa Cruz County Oversized Quad Mapping
 Map Extents Based on USGS 7.5 Minute Series
 Datum: NAD 83
 Projection: State Plane California Zone III
 Scale 1" = 1000'
 Road Centerlines : 2003 Ortho-Photography
 Imagery: 2016 Ortho-Photography



Street Classification

State Highway	Ramp
Business Route	Driveway / Un-named
Major Road	Alley
Street	Levee

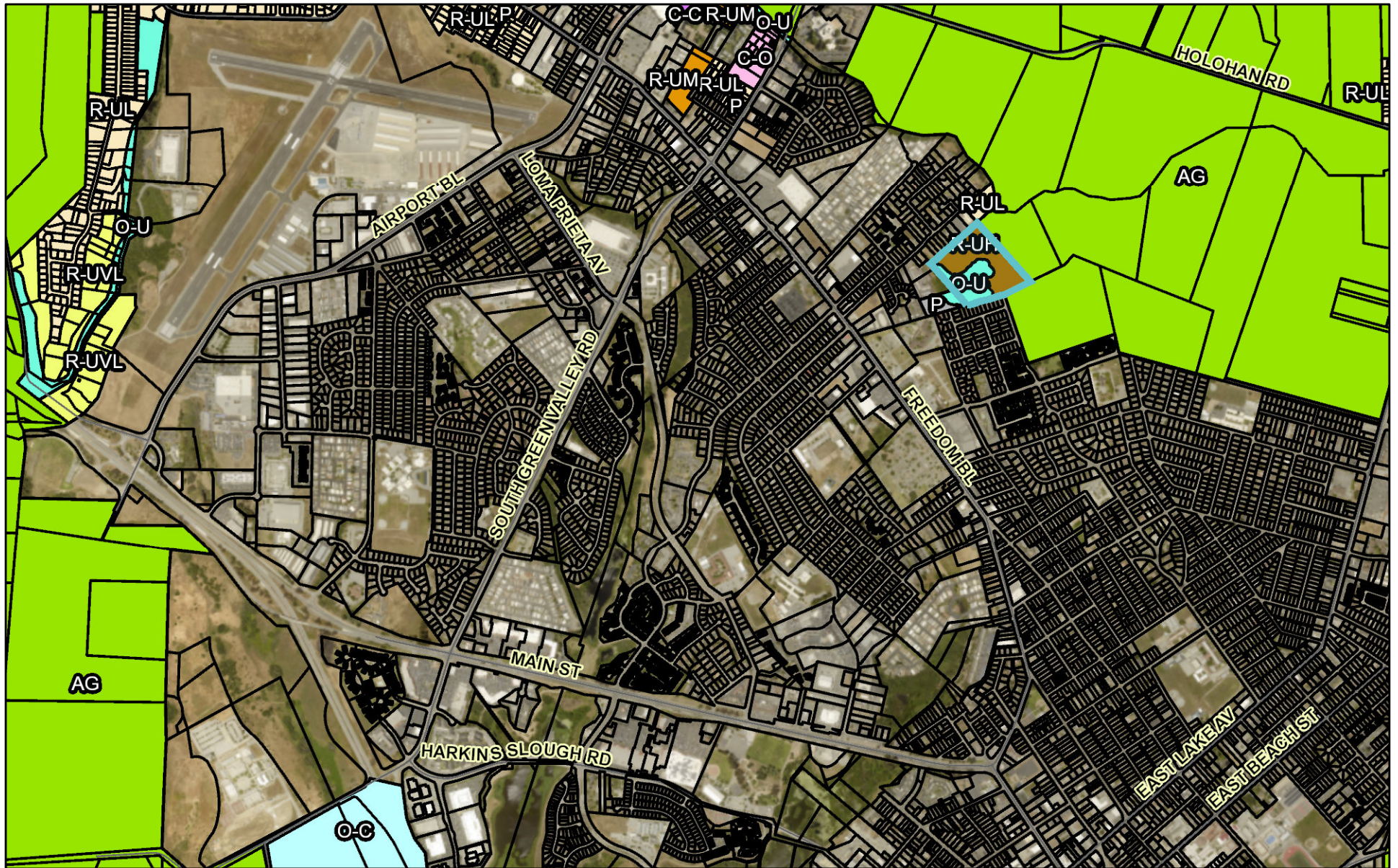
WATSONVILLE



- Hospital
- Clinic
- School Site
- Rest and Group Home
- Church
- Fire Station
- Possible Red Cross Site
- Park
- City Limits
- Fire Run Book Grid-600'

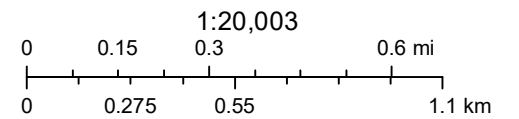
q

Pippin II Project Site



May 13, 2021

Parcels **Major Roads** **Gen'l Plan (BW text)**
 Parcels
 Major Roads
 Gen'l Plan (BW text)



County of Santa Cruz